

PowerFleet® Expert

PowerFleet® Expert is an OEM-agnostic, economical and intelligent fleet management solution for **medium sized** industrial truck fleets, such as forklifts. It is designed to make warehouse, manufacturing, distribution, retail and construction environments safer. This easy to use system ensures that only authorized operators are allowed to use the equipment after having completed an electronic checklist and that impacts are recorded. PowerFleet® Essence is designed for simplicity: from simple installation to intuitive use and management. It delivers powerful results without consuming your time.

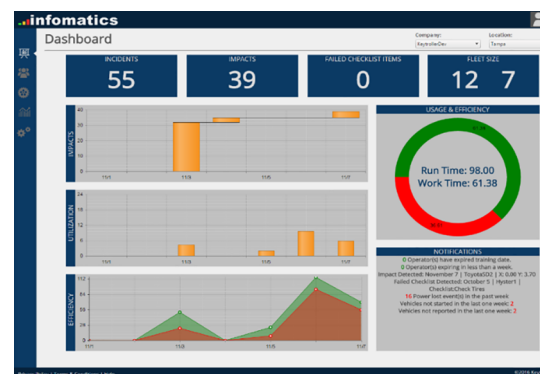


BENEFITS ... at a glance

- More safety
- Increased operation accountability
- Reduced maintenance costs
- Intuitive use
- Easy installation, easy Wifi set-up
- OEM-independent

FEATURES

- Operator Console OC 55 with built-in display
 - **Access Control** (RFID-card or pin code)
 - **Electronic Safety Checklists**
 - **Impact Recording**
 - Start and turn on ignition via relay
 - Easily installs on virtually any industrial vehicle (forklifts, tow tractors, etc.)
 - Rugged construction withstands harsh environmental conditions
 - **Infomatics** cloud-hosted software for data management
 - **WiFi** communication
 - Comprehensive reports & graphing
 - Record, up-and download of key vehicle/operator data automatically
 - Languages currently available: EN, GER,FR, ES
- ... optionally with seat belt and seat switch sensor



PowerFleet® Expert

SPECIFICATIONS	
Dimensions	103.5 x 89.5 x 46.5 mm
Operating Temperature Range	-40° to +80° C
Input Voltage:	9—60 VDC (converter for higher voltages available)
Power Consumption:	450mA (active mode), 2mA (sleep mode)
Back-up Battery Life:	5 years
Memory:	1MB ash
Display Technology:	Color TFT
Display Dimensions:	92mm X 100mm X 55mm
Display Resolution:	320 x 240 pixels
Status LEDs:	1
Keys (numeric):	5 (10/2); (other): Start / Stop (power on)
PIN:	Y
Proximity:	HID: optional
Analog Inputs/ Analog Outputs:	0 / 1
Digital Inputs:	3
Serial I/O:	2
Accelerometer:	3 axis (reporting X and Y)
External Accelerometer Support:	Optional
Antenna:	External
Version:	BLE v4.2
Wi-Fi Standard	IEEE 802.11 b/g/n
Wi-Fi Frequencies:	2.4GHz, 5GHz (DFS channels not supported)
Wi-Fi Security encryption:	Open, WEP64, WEP128, WPA1-PSK (TKIP), WPA2-PSK (AES)
Wi-Fi bandwidth:	20/40MHz
Ingress Protection:	IP67
Regulatory Certifications:	ISO9000, RoHS, CE, CC Part 15 (BLE module only)

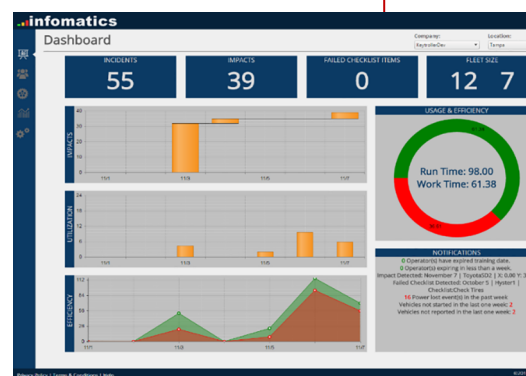
ABOUT I.D. SYSTEMS

I.D. Systems is a global leader and innovator of supply chain technologies, providing advanced solutions for securing, controlling, tracking, and managing high-value enterprise assets, including industrial vehicles, rental cars, dry van trailers, intermodal containers and chassis, and cargo. The company's patented technologies address the needs of organizations to monitor and analyze their assets and operations to reduce costs, increase efficiency, productivity, and improve profitability.

FEATURES

PowerFleet® Infomatics software

- Cloud-hosted fleet management software
- Dashboard of events as configured
- Display list of all authorized operators for a vehicle
- Display list and status of all active vehicles
- Create, edit and display safety checklists for vehicles
- Create, configure and display impact detection and control parameters for vehicles
- Configure and display sensors and triggers for vehicle events such as seat and seatbelt switches, oil sensors and timeouts
- Define, configure and display access control, impact, sensors, checklists, shifts, hour meters, maintenance and other operational parameters for each vehicle
- Create and configure new vehicle operators and display list of all authorized vehicle operators



Interested in more information?

Please contact us:

I.D. Systems GmbH
Am Seestern 4
40547 Düsseldorf
Germany
Tel. +49 211 3105454 60
Fax +49 211 3105454 69
kontakt@id-systems.com
www.id-systems.com

I.D. Systems (UK) Ltd.
10 St. Ann Street
Salisbury, SP1 2DN
United Kingdom
Tel. +44-1908-888-250
Fax +44-1908-888-005
uksales@id-systems.com
www.id-systems.com